

Estate: Smiths Lane  
Lot: 4223 Guling Rise, Clyde North

# Fairhaven



from  
**\$736,878**



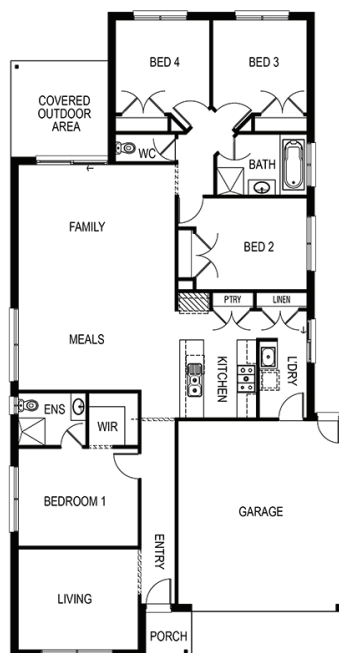
## Clovelly 225

Block: 12.5mW x 32mL House: 11.3mW x 21.07mL



Block Size: 400m<sup>2</sup>  
Title Exp: August 2023  
House Size: 22.53sq

Package Includes:



M 1800 324 742

E [info@fairhavenhomes.com.au](mailto:info@fairhavenhomes.com.au)

[fairhavenhomes.com.au/house-and-land/](https://fairhavenhomes.com.au/house-and-land/)

 **bridgewater** 